

# **ParlQuest<sup>®</sup>**

## **Professional Supplement**

**A Professional Supplement** is available to reinforce a parliamentarian's knowledge and understanding of *Robert's Rules of Order Newly Revised* (RONR).

*ParlQuest* was originally released in 2000. It is currently used throughout the country as an excellent resource for achieving registration and maintaining parliamentary skills.

*ParlQuest* has been significantly enhanced through the addition of several features. The Professional Supplement was released in August 2002 and then enhanced several times.

**ParlQuest now contains questions from the NAP Study Guide for Registration as well as another different and comprehensive set of 2,445 test questions. The new test questions include page and line number references.**

The *ParlQuest* Professional Supplement adds several additional features to the basic *ParlQuest* system. The Professional Supplement will also work with the research questions if the user is licensed to the Research Feature.

This feature is licensed directly from the company. The professional supplement feature requires at least *ParlQuest* Version 4.

**These features are:**

- **Advanced Search function**
  - contains more than 4,400 words.
  - works with the regular selections. (e.g. page, chapter, section, rule, tinted page, test part selections, or all.)
  - can search by one word, all words, any words, or a particular phrase.
  - can search based on selected text in the questions, answers, or both.

– can include or omit similar words (synonyms).

– works with the *ParlQuest* Research Feature if present.

- **Expanded Randomized Test**

– random test can be selected based upon a random sequence code. Maximum number of random sequences is 99,999,999.

– random test can be created that is similar to the various parts of the registration examination.

- **Randomized Answer Function**

– study guide answers can be randomized regardless of test selection or sequencing.

- **Page Sequencing Function**

– overrides all selections (standard or random) and organizes the questions in sequence by first page reference.

### **Other Feature(s) –**

The *ParlQuest* Research Feature permits the user to interactively develop his or her skill at finding research questions.

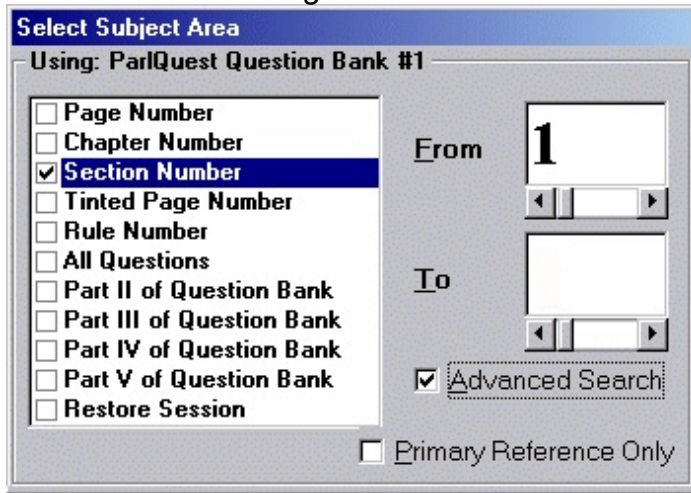
This feature provides over 2,300 selected research questions from RONR.

The research feature is a special feature that can be licensed directly from the company. This research feature requires at least *ParlQuest* Version 4.

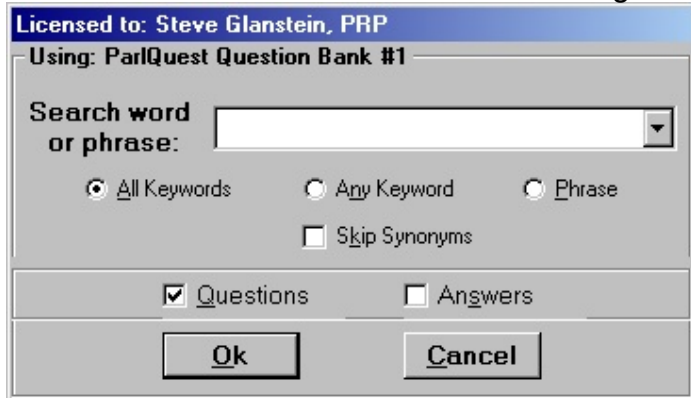
### **Use of Professional Supplement –**

After the professional supplement is installed, a slightly different selection option will appear during *ParlQuest* selection. The advanced search option works with either the “Research Questions” or the “Study Guide.”

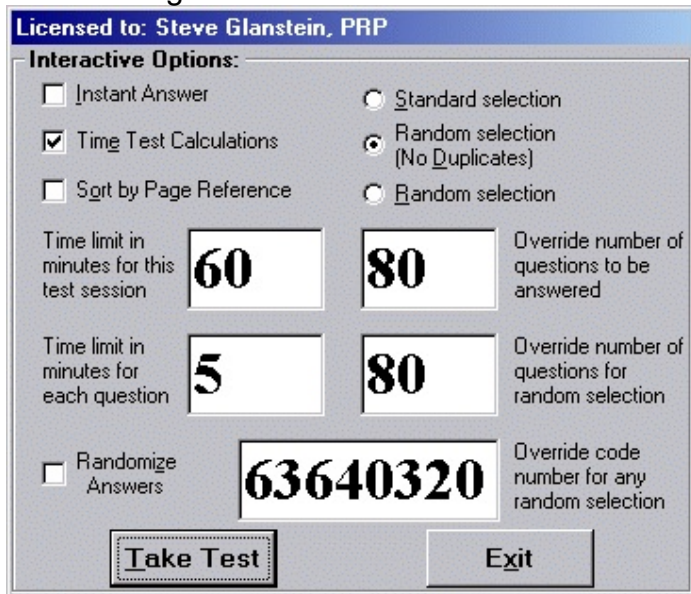
The top part of the selection window looks similar to the following:



The “Advanced Search” box has been highlighted and checked to show that the Advanced Search was selected. The Advanced Search window looks similar to the following:



The interactive options window will also show the additional options provided by the professional supplement. This window looks like the following:



The “Instant Answer,” “Time Test Calculations,” “Standard selection,” and “Random selections” are part of the basic *ParlQuest*.

In the previous window, there were 80 questions that met the selection criteria. The user could select a pre-specified number of questions randomly from the 80 available.

The “Sort by Page Reference” function forces the questions to be ordered by the primary reference page number in RONR.

The “Randomize Answer” function will randomize the answer sequence. This makes the test much more difficult and forces the user to study the questions and answers carefully before providing a response.

This is an excellent way for credentialed parliamentarians to practice their skills without relying on a visual memory of the test questions.

The “Random Selection” options now contain an “Override code.” This code controls the sequence of the test questions. There are about 99,999,999 test combinations available. A specific test can be reproduced if the primary reference, override code, number of questions, and random answer selection codes are saved.

Minimum requirements and Upgrade Policy: Same as the basic *ParlQuest* system. No extra disk or memory required.

**Professional Supplement:**  
**Price – \$50**  
**(Hawai'i residents -- add \$2.36 Tax)**

For further information contact: Steve Glanstein, PRP. E-mail us at: [steveghi@gmail.com](mailto:steveghi@gmail.com) <http://www.parlquest.com> Phone: 808-423-6766.

© Copyright 2014, by RPG III, Inc. dba Management Information Consultants • All Rights Reserved  
 • *ParlQuest* is a registered trademark of RPG III, Inc.  
 • Prices and terms subject to change without notice. (V4.1d – 10/2014)

\* Windows is a trademark of Microsoft Corporation.